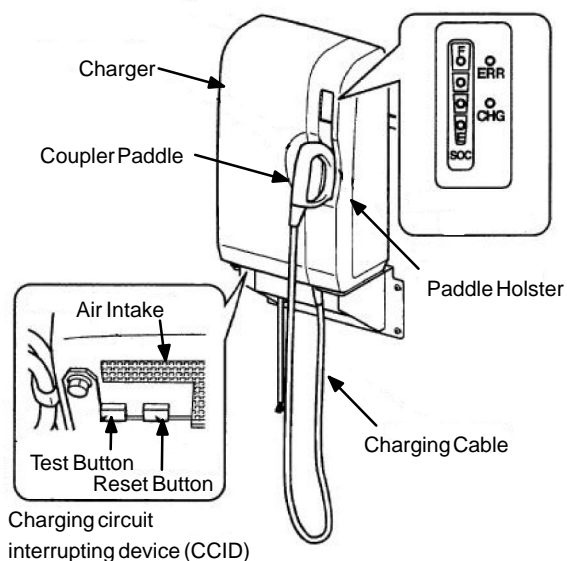


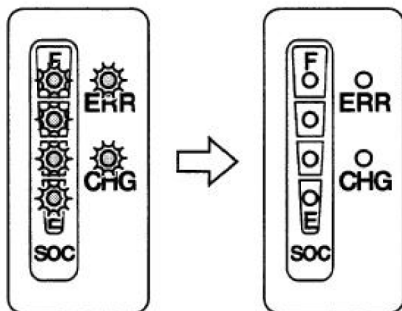
2002 RAV4 EV Charger Diagnostic Flowchart

Step A

- A1.** Clean and remove any debris blocking the air intake cooling screen underneath the charger.



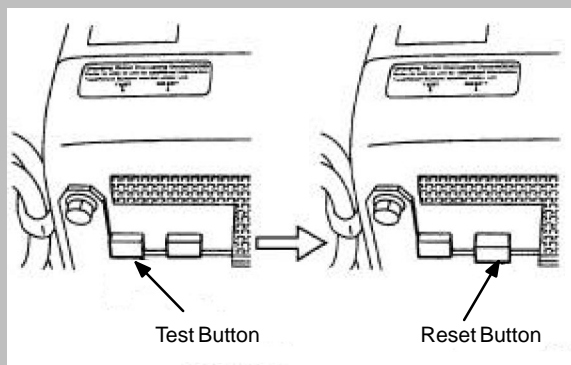
- A2.** Remove paddle from the holster and observe the charger indicator display lights.
- A3.** Did the indicator lights come on and then go off?



- Yes → Proceed to **Step C1**.
- No → Place paddle back in holster and proceed to **Step B1**.

Step B

- B1.** Push in Charging Circuit Interrupting Device (CCID) **TEST** button located underneath charger.



- B2.** Did the **TEST** button click when pushed in?
- Yes → Proceed to **Step B3**.
- No → Locate the building circuit breaker for the charger. Turn the breaker off for 10 minutes and then turn back on. Proceed to **Step B3**.
- B3.** Push in the CCID **RESET** button located next to the **TEST** button.
- B4.** Remove the paddle from the holster.
- B5.** Did the indicator lights come on and then go off?
- Yes → Proceed to **Step C1**.
- No → Call CFCI for service. Note error symbol A in Worksheet step 2D.

CFCI—Clean Fuel Connection Inc.
(888) 890-GOEV

Step C

- C1.** Do the indicator display lights flash continuously?
- Yes → Call CFCI for service. Note error symbol D in Worksheet step 2D.
- No → Proceed to **Step C2**.
- C2.** Insert the paddle into the vehicle charge port.
- C3.** Does the red **ERR** light stay on?
- Yes → Bring the vehicle to RAV4 EV Dealer for diagnosis. Note error symbol C in Worksheet step 2D.
- No → Proceed to **Step C4**.
- C4.** Does the white **CHG** light stay on and the vehicle begin to charge?
- Yes → Charger is working normally. Have customer monitor condition. Note error symbol F in Worksheet step 2D.
- No → Proceed to **Step C5**.
- C5.** Does charging begin while wiggling the charge cable?
- Yes → Call CFCI for service. Note error symbol E in Worksheet step 2D.
- No → Bring the vehicle to the RAV4 EV Dealer for diagnosis.