

2P+2p DC Power Connector

Description:

High Voltage, sealed, electromagnetically shielded connector for Battery/Inverter applications on electric drive systems

Features:

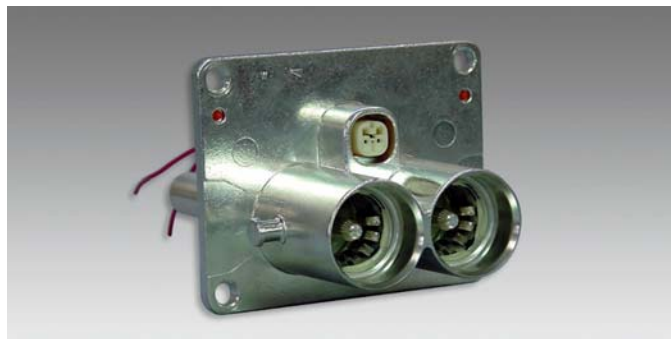
- Electromagnetically shielded connector
- Contact reliability ensured by using multi-contact spring terminal
- Last to mate/first to break safety interlock circuits
- Bolt on module side connector

Benefits:

- No separate drain wires required for grounding EMI induced current
- Lower insertion force due to use of lever
- Safety interlock circuits assure customer safety
- Module side connector easily integrates into Motor or Inverter case

Specifications:

Part Number	7325-6498-02 7325-6499-02	7325-6490-51
Type	Unit (Male) Side	W/H (Female) Side
Pole	2P + 2p	2P + 2p
Voltage		
Capacity	DC600V	DC600V
Current Capacity	120A	120A
Applicable Wire Size	N/A	EEXBS 20mm ² EEXBS 15mm ²
Shield Effectiveness	40dB	40dB



Status: In Production

For more information, contact info@us.yazaki.com